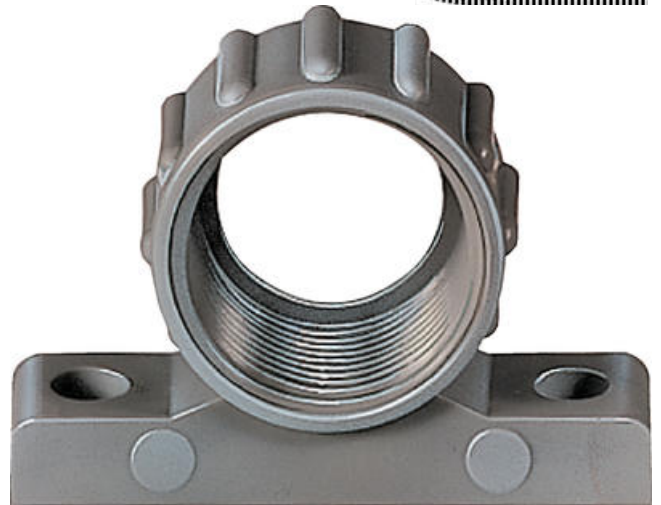


SLANGFÄSTE BWK-M / BWK-P

BWK-M, BWK-P

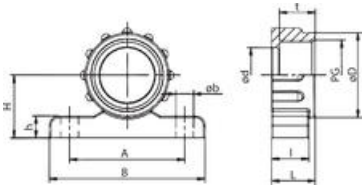
0315.001.020
 Kopplingshållare M20x1,5

- Slangfäste
- Polypropylen
- Metrisk och PG-gänga



PRODUKTBESKRIVNING

BESTÄLLNINGSNUMMER



Beställningsnr	Metr. EN 60423	A mm	B mm	ø B mm	ø D mm	ø d mm	H mm	h mm	L mm	l mm	t mm
0315.001.020	M 20 x 1,5	37,5	50,0	5,7	27,0	17,5	20,0	7,0	13,5	12,0	11,5
0315.001.025	M 25 x 1,5	37,5	57,0	5,7	32,0	22,0	25,0	8,0	13,5	12,0	11,5
0315.001.032	M 32 x 1,5	53,5	67,0	6,7	41,0	30,0	27,5	8,0	16,5	15,0	14,0
0315.001.040	M 40 x 1,5	65,5	79,5	6,7	52,0	39,0	33,0	8,5	16,5	15,0	14,0
0315.001.050	M 50 x 1,5	69,5	86,0	6,7	60,0	47,0	36,0	9,5	17,5	15,5	15,0

Beställningsnr	PG DIN 40430	A mm	B mm	ø B mm	ø D mm	ø d mm	H mm	h mm	L mm	l mm	t mm
0315.000.009	9	29,0	40,0	5,7	19,0	10,5	14,5	6,0	14,0	12,0	11,5
0315.000.011	11	37,0	50,0	5,7	27,0	13,0	20,0	7,0	14,0	12,0	11,5
0315.000.013	13,5	37,0	50,0	5,7	27,0	15,5	20,0	7,0	14,0	12,0	11,5
0315.000.016	16	37,0	50,0	5,7	27,0	17,5	20,0	7,0	14,0	12,0	11,5
0315.000.021	21	43,0	57,0	5,7	32,0	22,0	25,0	8,0	14,0	12,0	11,5
0315.000.029	29	53,0	67,0	6,7	41,0	30,0	27,5	8,0	16,5	15,0	14,0

0315.000.036	36	65,0	80,0	6,7	52,0	39,0	33,0	8,5	16,5	15,0	14,0
0315.000.048	48	76,0	93,0	6,7	65,0	53,0	38,5	10,0	19,0	16,5	16,0

TEKNISK DATA

TEKNISKA DATA

Förpackningsstorlek	50 st
Gänga	M20x1,5 met. EN 60423
Material	Polypropylen
Temperaturområde från	-40 °C
Temperaturområde till	100 °C
Vikt kg/100 ±10%	0,6